

kin  
bā  
CELL-TECH



LOVE  
YOURSELF

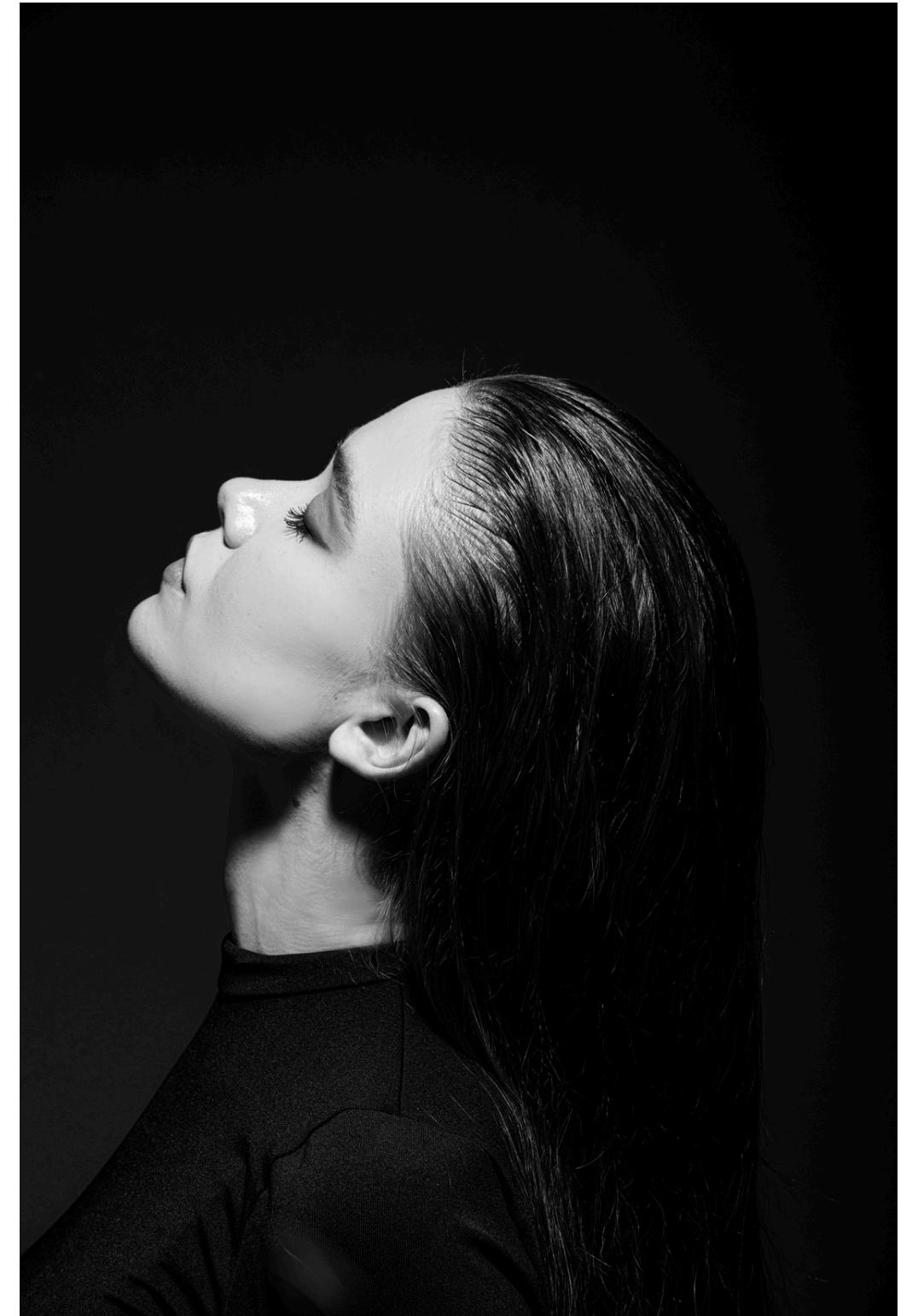


## OUR COMPANY

We are a new born company founded by people with more than 25 years of experience in professional hair cosmetic industry.

## OUR DREAM

To live in your head.  
Inside and outside.



## OUR PHILOSOPHY

Our best efforts are always made in order to realize how lovely you and your hair can be.



## AMARANTH EXTRACT

Restores natural movement and aspect of healthy hair. It also provides improvement in nutrition, moisturization, brightness, smoothness and manegeability.



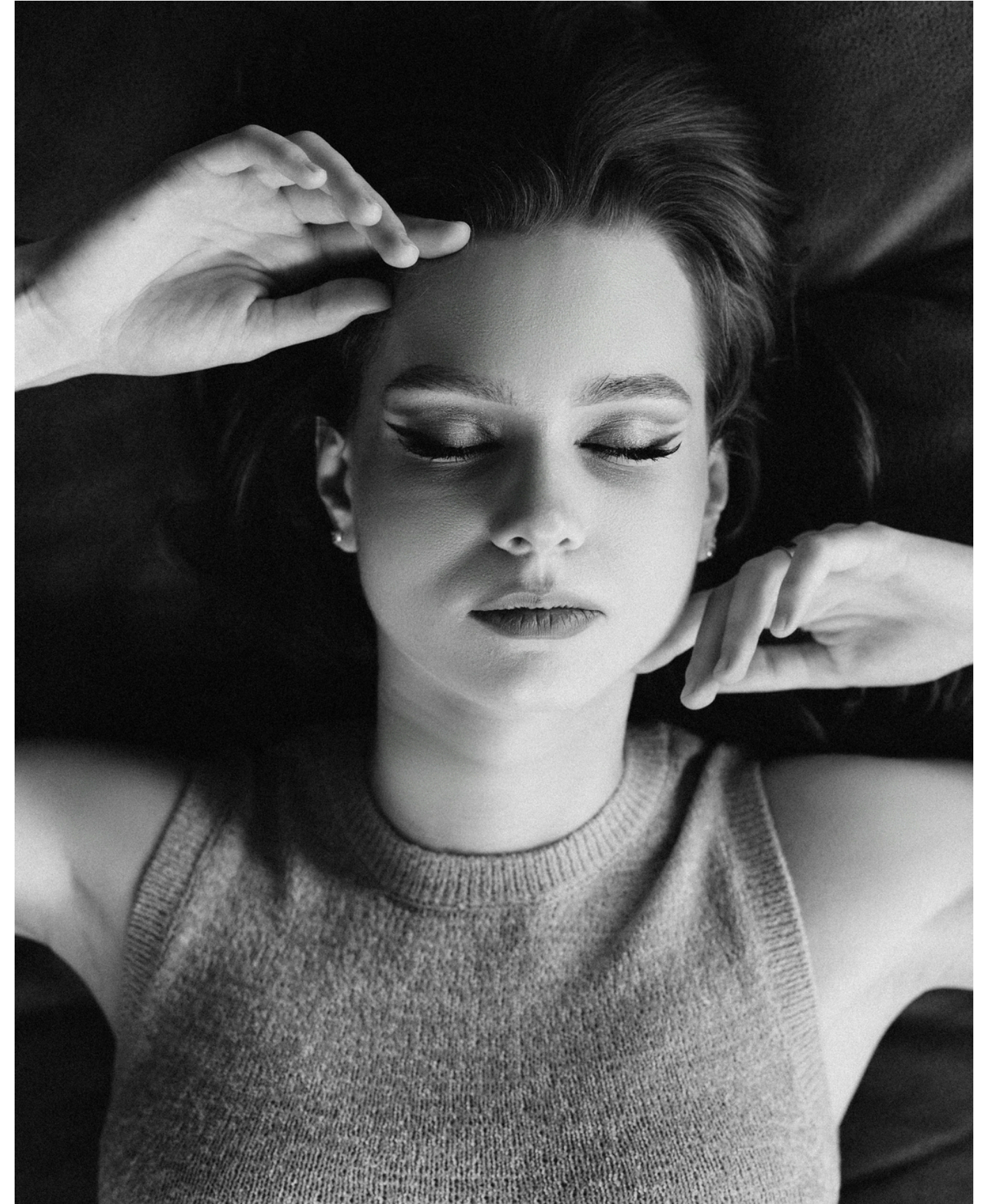


kin  
bā  
CELL-TECH

**COLLECTION**

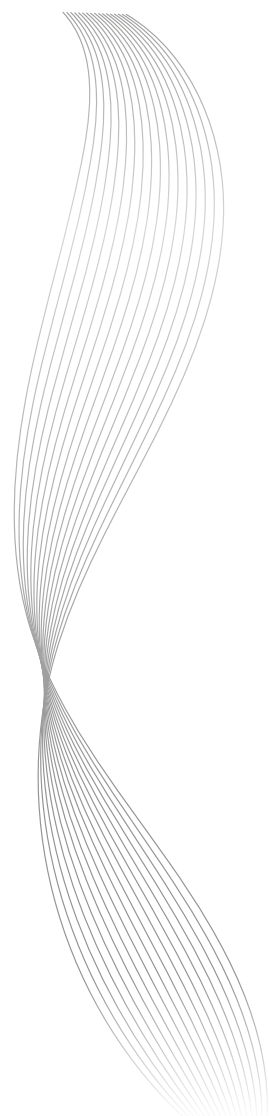
- Revitalizing
- Strenghtness
- Smoothness

S.O.S.  
COLLECTION



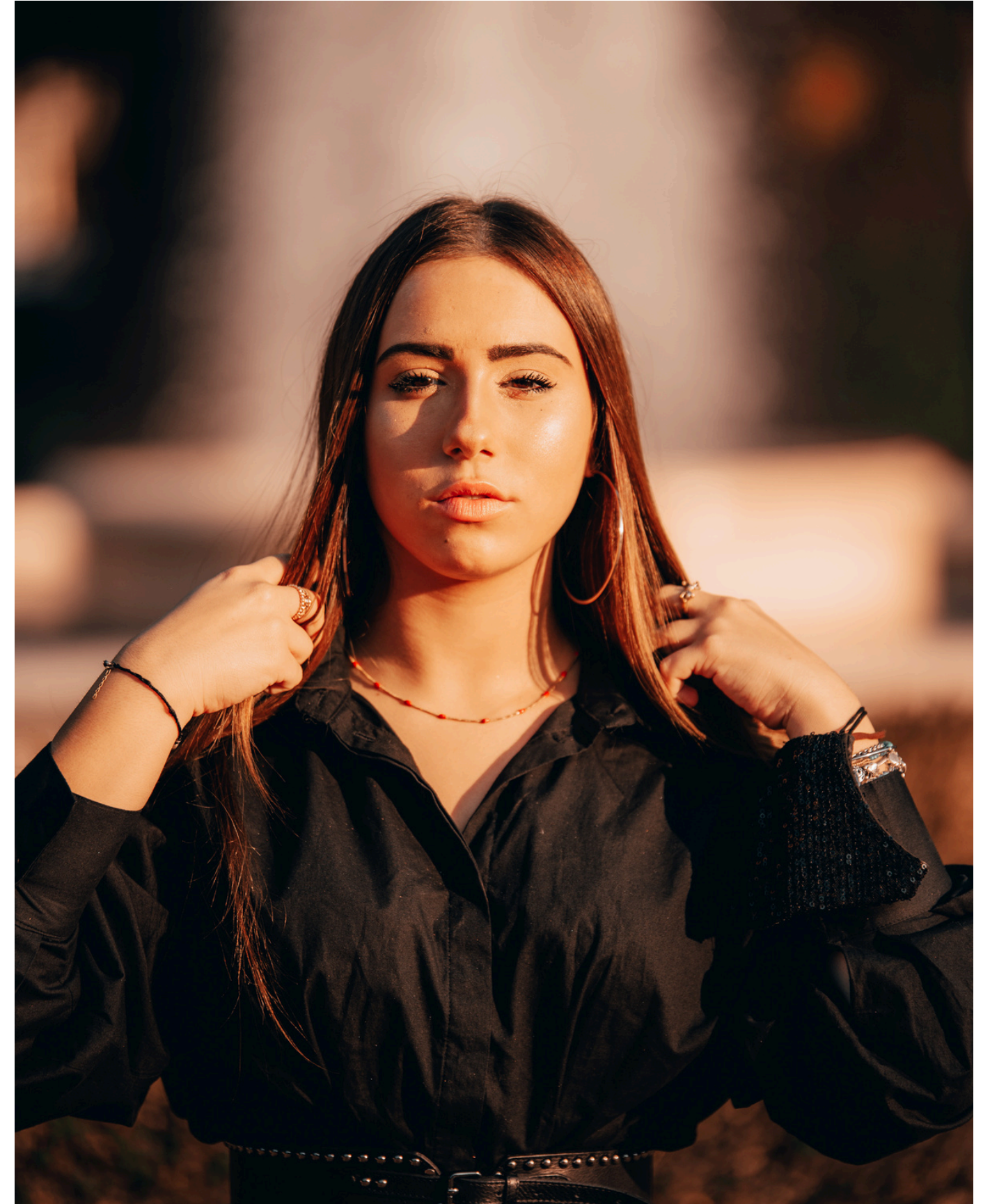
S.O.S. COLLECTION

- Shampoo
- Conditioner
- Masque



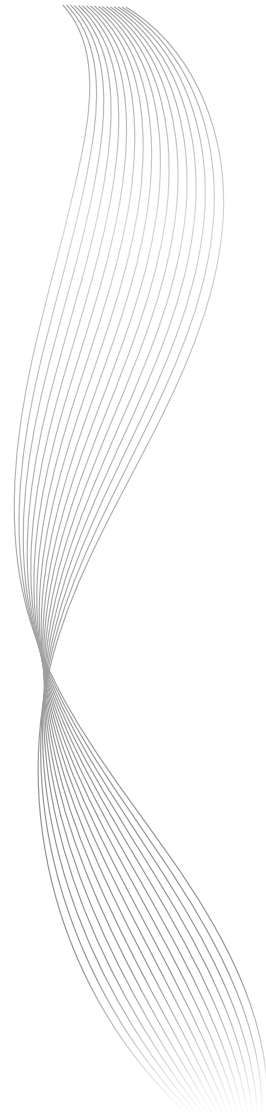
- Moisturizing
- Manegeability
- Shine

H2O  
COLLECTION



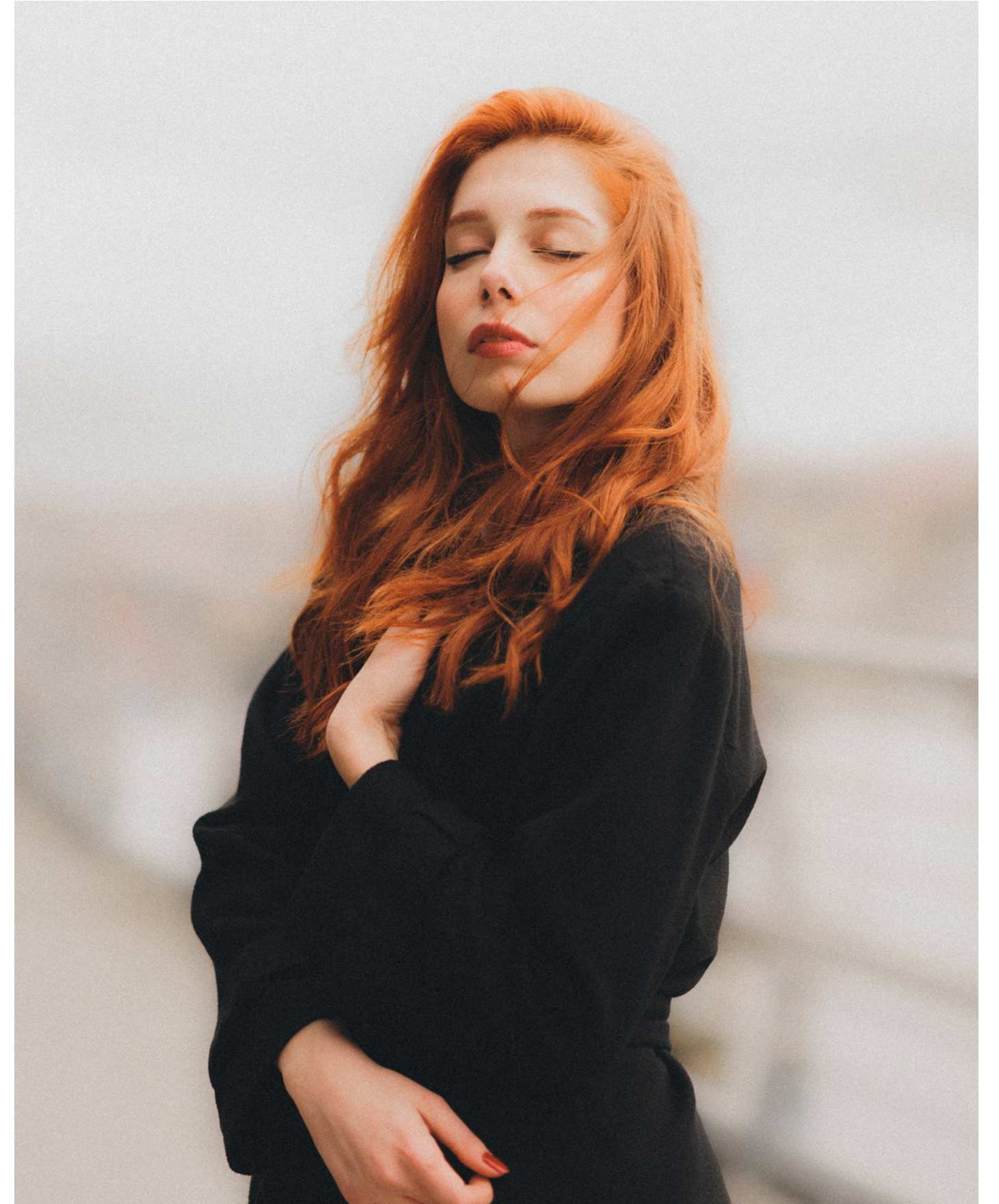
H2O COLLECTION

- Shampoo
- Conditioner
- Masque



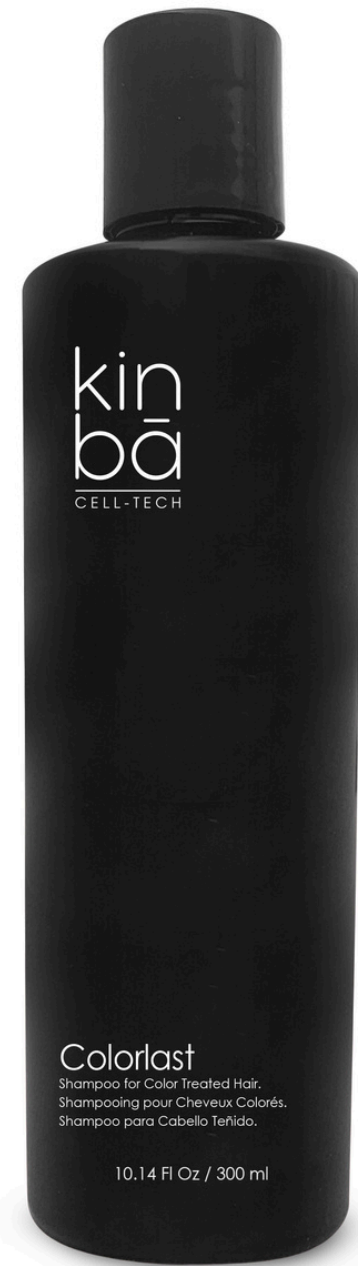
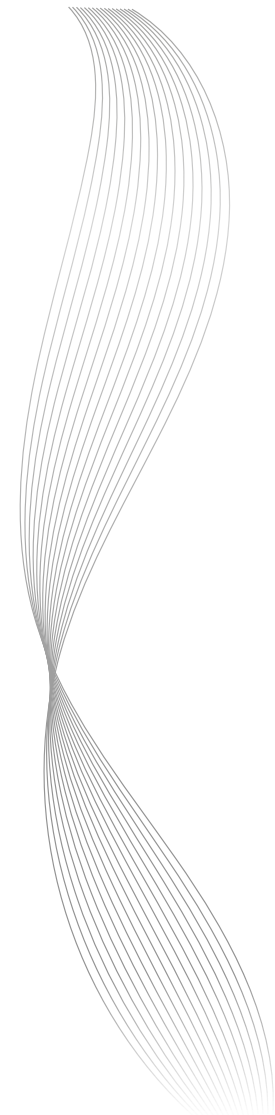
- Color Protection
- Hair Resistance
- Shine

COLOR  
COLLECTION  
CON



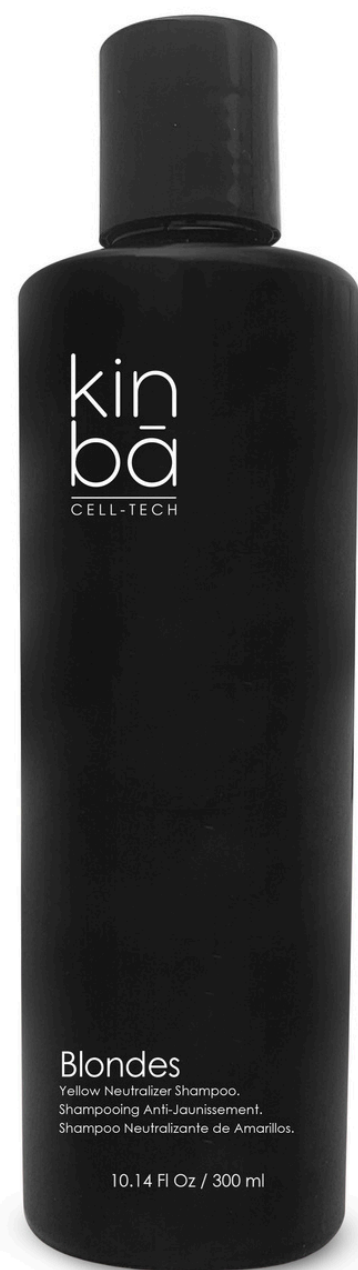
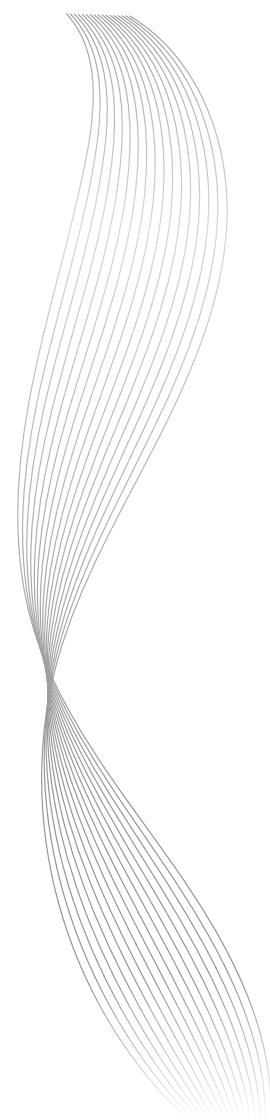
COLORLAST

- Shampoo
- Conditioner
- Masque



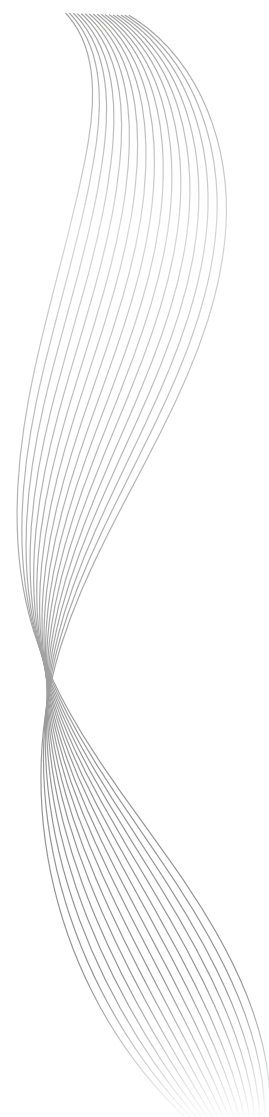
BLONDE HAIR CARE

- **Blondes:** anti yellow shampoo
- **Ebony:** black shampoo



INTENSA ENHANCERS

- Intensify
- Extend
- Brightness



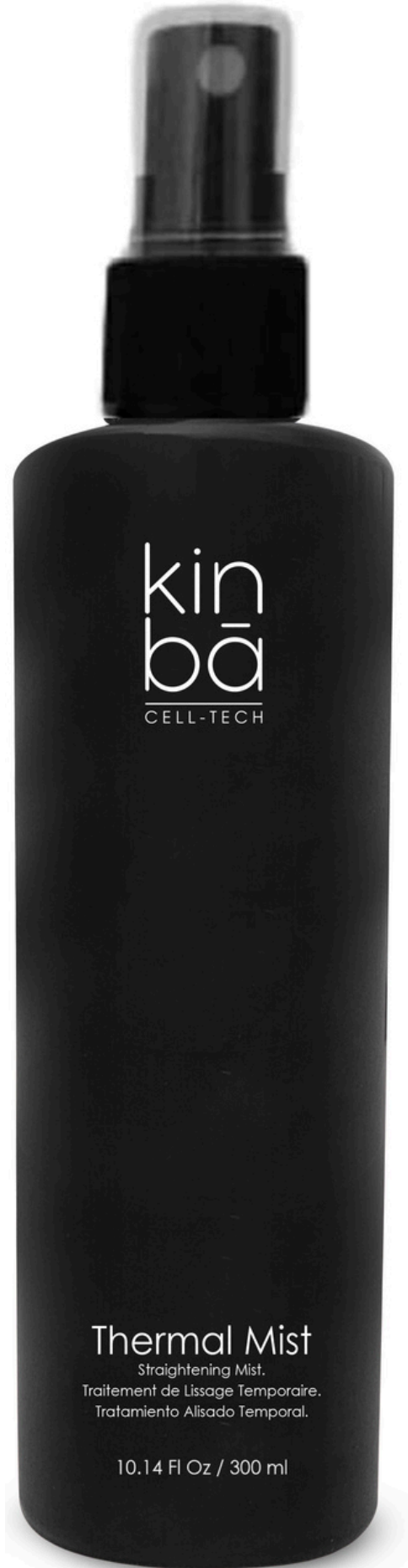
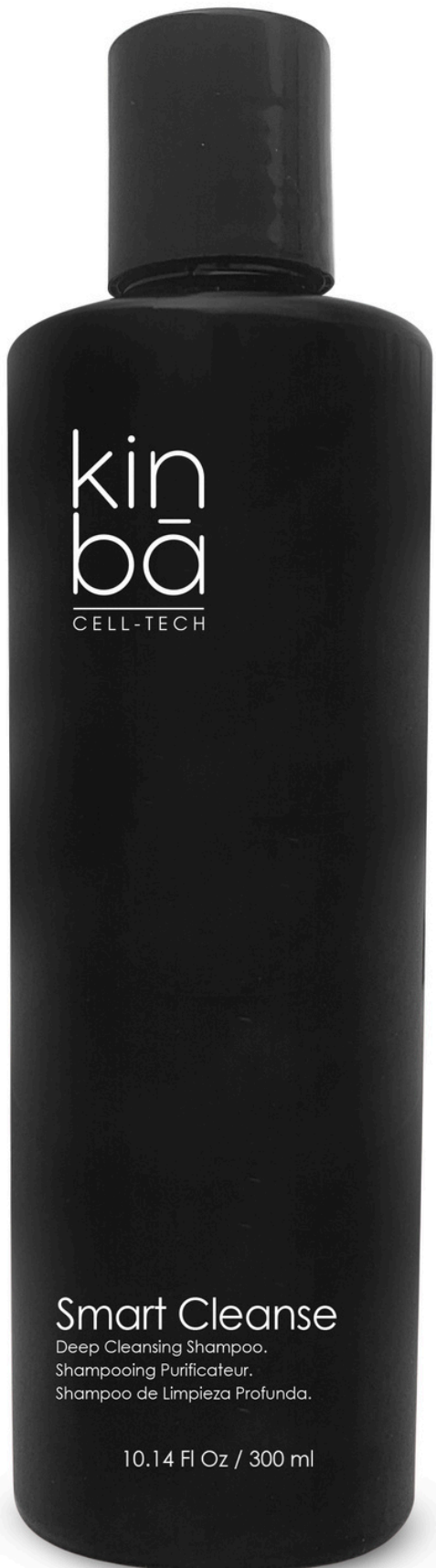
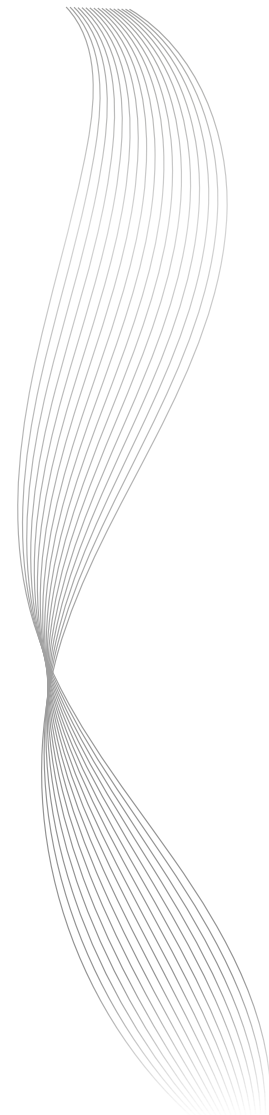
- Reconstruction
- Balance
- Strenghtness

BALANCE  
CO  
LLE  
CTI  
ON

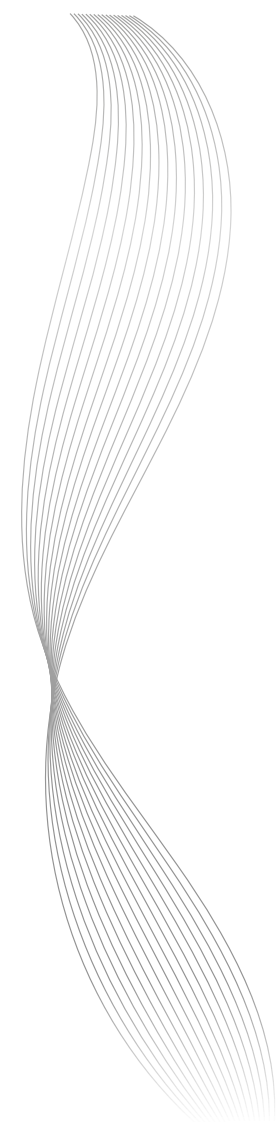


BALANCE

- **Smart Cleanse:** Deep Cleansing Shampoo
- **Silka Therapy:** silk therapy for hair
- **Thermal Mist:** thermal protector for hair
- **Vivify:** All-In-One Hair Deep Treatment



- **Twice:** Two-Phase Hydrating Treatment
- **Blow Dry:** Brightening Hair Treatment
- **60 second Heal:** Intensive Immediate Treatment



- Color
- Bleach
- Developers

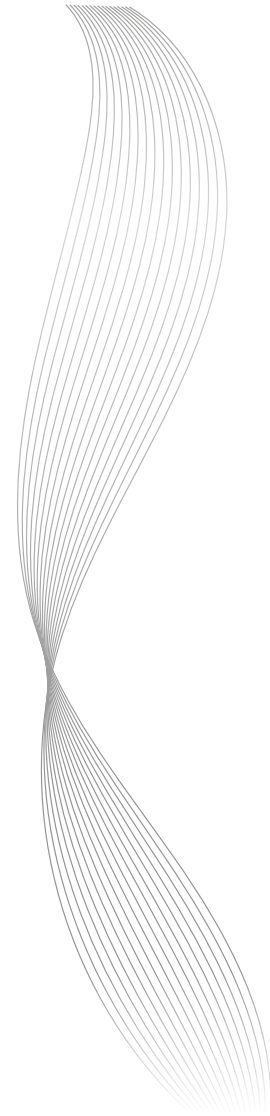
# PRO DUCTI ON COLLE CTION





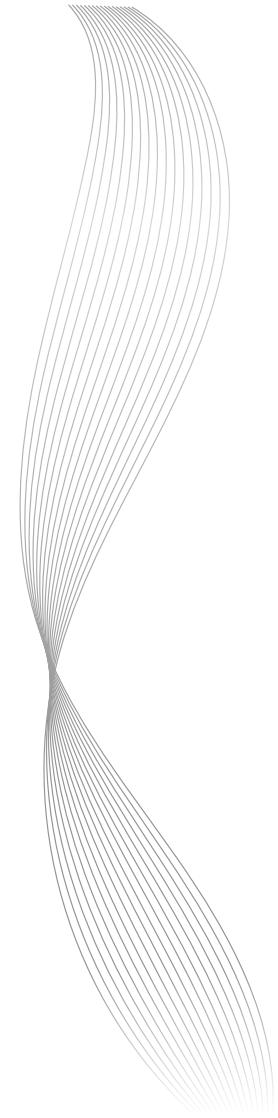
# HAIR COLOR

- 90 tones
- 3 oz tube
- 1 + 1 1/2 formula
- Low-ammonia
- 100% Gray Hair Covering



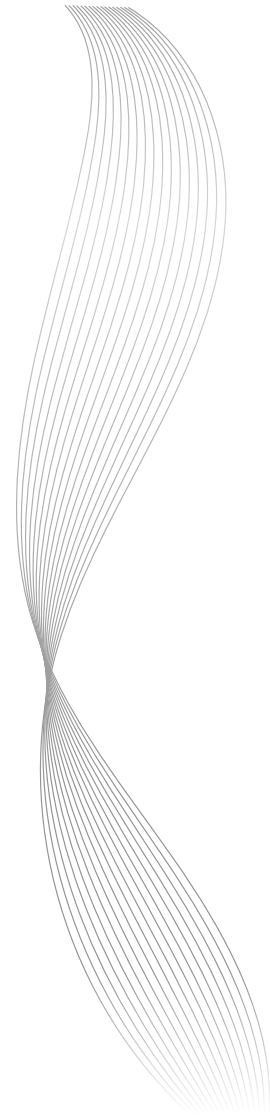
## POWDER BLEACH

- Yellow tones neutralizer
- With cationic conditioners which are gentle with hair
- Lightens up to 7 levels



kin  
bā  
CELL-TECH

DEVELOPERS





**KINBA  
MEANS**

VANGUARD,  
PROFESSIONA  
LISM AND  
INNOVATION

